



THE BRIGMAN COMPANY

November 2, 2022

Kristin Thompson, agent for
Carolina Cypress Holdings
P.O. Box 733
Latta, SC 29565

RE: Wetland Assessment
Carolina Cypress Holdings, LLC Tract
TMS# 027-00-01-062
Horry County, South Carolina

Dear Ms. Thompson:

The Brigman Company (TBC) has completed a Wetland Assessment for the Carolina Cypress Holdings, LLC Tract. Our services were conducted in accordance with The Brigman Company Professional Services Contract authorized on October 9, 2022. The purpose of this Wetland Assessment is to provide our opinion, based on a site visit and publicly available mapping, as to the potential presence of wetland areas within the Property.

TBC reviewed publicly available mapping sources in preparation of this report, such as: color infrared aerial photographs from 1994 and 2006, U.S. Geological Survey (USGS) 7.5-Minute topographic quadrangle map dated 1984, U.S. Department of Agriculture (USDA) soils information dated 1982, U.S. Fish & Wildlife Service (USF&WS) National Wetland Inventory maps dated 2009, and the 2010 LiDAR data. Site observations were conducted on October 12, 2022.

Based on our review of the previously noted sources of information, in conjunction with the site observations made on October 12, 2022, we believe that Property contains approximately 261.9 acres of forested wetlands and 53.1 acres of uplands. The attached exhibit depicts the approximate location of the wetlands and uplands on the Property.

Our findings have been developed in accordance with generally accepted standards of practice in the Charleston District of the United States Army Corps of Engineers. No warranty is expressed or implied. Prior to any major planning, engineering, or land acquisitions, we recommend a wetland delineation with final approval by the US Army Corps of Engineers. Please be aware that the United States Army Corps of Engineers is the sole authority responsible for certifying the presence or absence of jurisdictional wetlands and future changes in their regulations/guidelines may affect the findings represented in this letter.

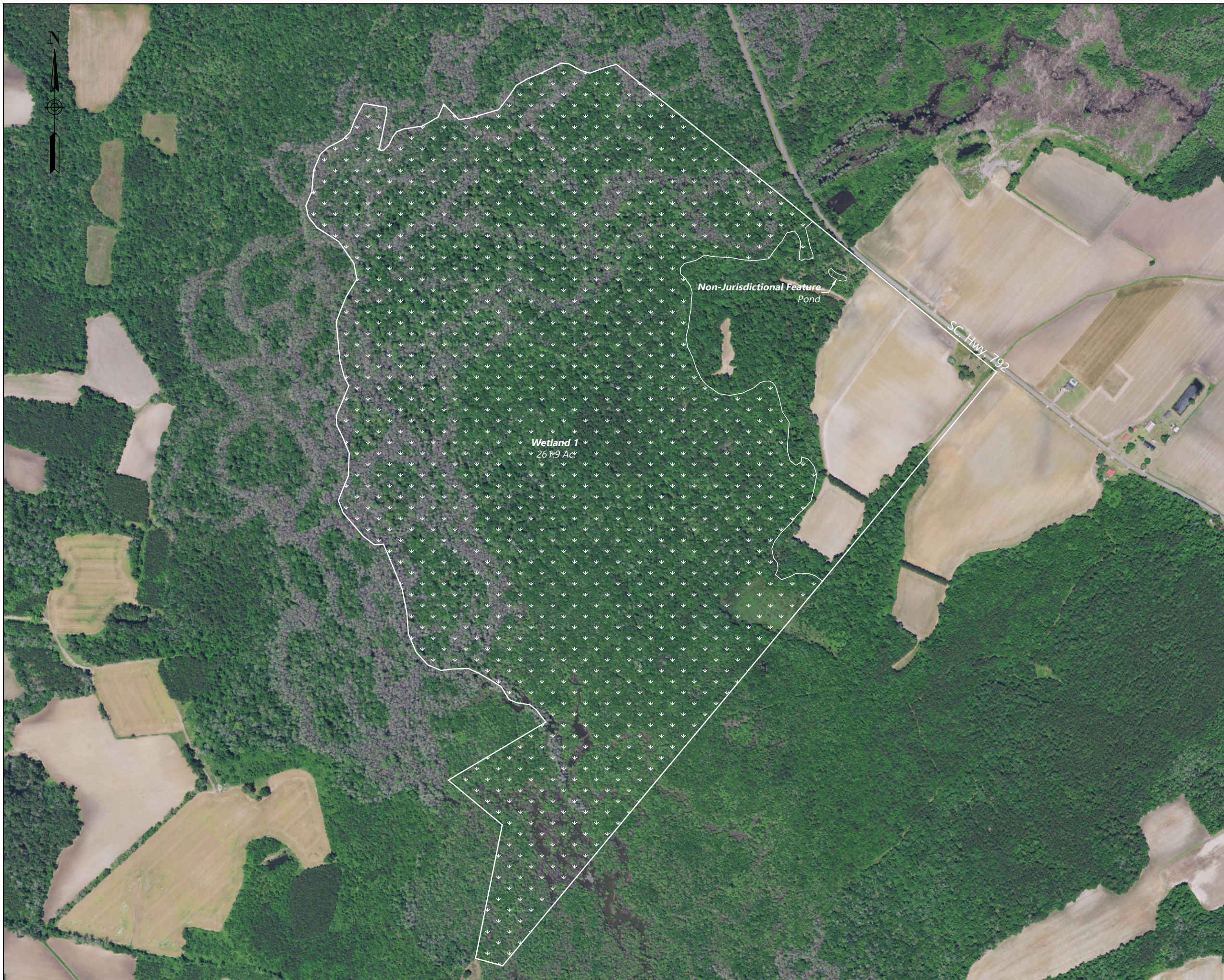
TBC appreciates the opportunity to be of service to you by conducting this Wetland Assessment on the above-referenced project. Should you have any questions or require additional information, please contact us at (843) 248-9388.

Sincerely,

Joseph C. Floyd
Project Manager

www.thebrigmancompany.com

P.O. Box 1532 – Conway, SC 29528 – (843) 248-9388



Wetland Assessment

Carolina Cypress Holdings, LLC Tract

Bayboro Township,
 Horry County, South Carolina
 Tax Map Number 027-00-01-062

Area Summary:

Wetland	261.9
Uplands	53.1
Total	315.0

Notes

1. Potential wetland/non-wetland areas depicted here on have not been verified by the US Army Corps of Engineers. Areas depicted as wetlands were identified using a combination of available remote sensing and onsite investigation. Prior to any land disturbing activities, or land transactions a final jurisdictional determination should be obtained from the US Army Corps of Engineers.
2. Boundary information provided by Bryan Pittman using a combination of the existing plat, aerial photography, Johnson & Roberts maps, and what he has recently shot for a survey he is currently working on for Danny Ray Hewitt. .
3. Onsite inspection was conducted on 10-12-22.

Legend

Line Legend

Boundary	
Adjacent Boundary	
Right of Way	
Non-Wetland Water	
Non-Aquatic Resource	
Dirt Road	
Bulkhead	

Hatch Legend

Wetland	
Non-Wetland Waters	

Symbol Legend

Data Point	
Photo Point	
Property Corner	

Prepared For	Carolina Cypress Holdings, LLC
Job #	02318-22433
Date	10-21-22

Graphic Scale

